

Panasonic



VENTILATING FAN
WALL-MOUNT TYPE

FEATURES

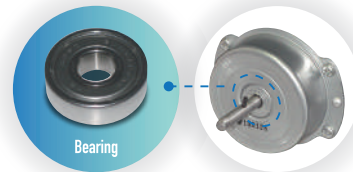
1 SMART DESIGN

Adapted the new flat design, it creates a feeling of floating on the wall upon installation. Even for the louver series, the louver design is slim. The minimalistic design allows the ventilating fan assimilate into the space easily.



2 HALF PITCH MOTOR & BEARING

All models adopt half pitch condenser motor and long life bearing that prolongs the product durability, with average 30,000 hours life time. They also enable energy saving by reducing power consumption down to average 13%.



"HP Motor" and "Bearing" are used

3 THERMAL FUSE EQUIPPED

All motors are equipped with thermal fuses which stop the operation of the fans when they are overheated. It can prevent further temperature rise and reduce the risk of potential fire hazard of the motors.

4 SILENT STREAM FAN

New Blade design applies advanced aerodynamic principle that optimizes the design of blade shape.



3D Sickle Blade

New Blade design adopts an increased blade size and airfoil curve optimization. It can increase the air volume by adjusting the blade shape to match the airflow. Also, it can lower the noise by evening the airflow velocity.

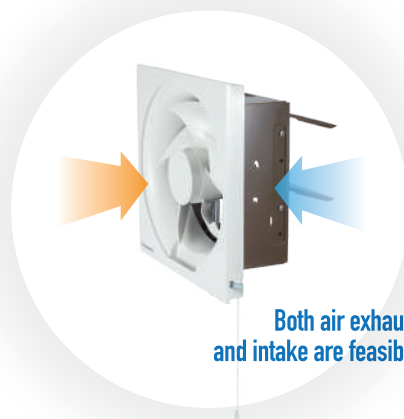
Fingers Hang All Around

New spinner design improves the detachability which makes it easier to be removed for cleaning.



5 REVERSIBLE FUNCTION

With a pulling string, the fan blade spinning direction can be reversed, which brings greater flexibility that the ventilating fan not only exhausts air, but also intakes air. (only applicable for Reversible Louver series and Reversible series)



Both air exhaust and intake are feasible

AUTOMATIC SHUTTER LOUVER SERIES

FV-20AL1 / FV-25AL1 / FV-30AL1

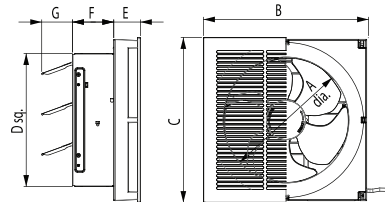
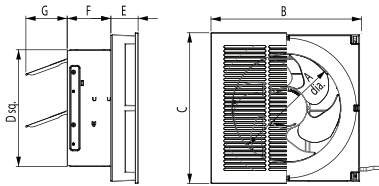


REVERSIBLE LOUVER SERIES

FV-20RL1 / FV-25RL1 / FV-30RL1



DIMENSIONS (mm)



Model No.	A	B	C	D	E	F	G
20AL1 / 20RL1	223	310	310	240	56	90	85

Model No.	A	B	C	D	E	F	G
25AL1 / 25RL1	273	360	360	290	58	90	67
30AL1 / 30RL1	317	410	410	340	58	90	83

AUTOMATIC SHUTTER SERIES

FV-20AY1 / FV-20AU1 / FV-25AU1 / FV-30AU1

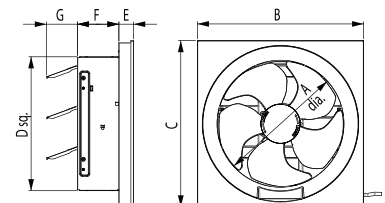
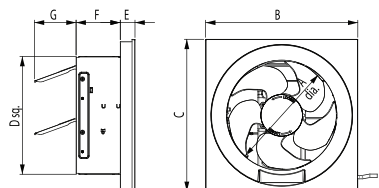


REVERSIBLE SERIES

FV-20RG1 / FV-25RG1 / FV-30RG1



DIMENSIONS (mm)



Model No.	A	B	C	D	E	F	G
FV-20AY1 / 20AU1 / 20RG1	223	310	310	240	30	90	85

Model No.	A	B	C	D	E	F	G
25AU1 / 25RG1	273	360	360	290	32	90	67
30AU1 / 30RG1	317	410	410	340	32	90	83

SPECIFICATION

Series	Model		Consumption [W]		Air Volume				Noise [dB(A)]		Weight [kg]
			50Hz	60Hz	50Hz	60Hz	50Hz	60Hz	50Hz	60Hz	
					[CMH]	[CMH]	[CFM]	[CFM]			
Automatic Shutter Louver Series	FV-20AL1	Exhaust	18	22	550	610	323	359	38	42.5	2.0
	FV-25AL1		25	31	840	860	494	506	40.5	42	2.5
	FV-30AL1		28	33	1000	1000	588	588	39	40	2.8
Reversible Louver Series	FV-20RL1	Exhaust	17	-	550	-	323	-	38	-	2.1
		Intake	12.5	-	430	-	253	-	45	-	
	FV-25RL1	Exhaust	25	-	840	-	494	-	40.5	-	2.5
		Intake	16.5	-	600	-	353	-	43	-	
	FV-30RL1	Exhaust	27.5	-	1000	-	588	-	39	-	2.8
		Intake	18	-	750	-	441	-	42	-	
Automatic Shutter Series	FV-20AY1	Exhaust	13.5	-	380	-	223	-	27	-	1.9
	FV-20AU1		18	22	590	680	347	400	36	39	
	FV-25AU1		25	31	950	990	559	582	38	39	
	FV-30AU1		28	33	1200	1200	706	706	37	37	
Reversible Series	FV-20RG1	Exhaust	17	-	590	-	347	-	36	-	2.0
		Intake	12.5	-	440	-	258	-	45	-	
	FV-25RG1	Exhaust	25	-	950	-	559	-	38	-	2.4
		Intake	16.5	-	670	-	394	-	45	-	
	FV-30RG1	Exhaust	27.5	-	1200	-	706	-	37	-	2.7
		Intake	18	-	880	-	517	-	44	-	

Values in specification table are at 220V.

- 1.The value of power consumption, air volume and noise are specified at the static pressure of 0 Pa.
- 2.The value of air volume is the mean value which is measured by our company.
- 3.The value of noise level is measured at 1m apart from the left, the right and the front of product, then get the average of three values.
- 4.The value of noise level is A weight average sound pressure level, the mean value is measured by our company.

WALL MOUNT TYPE

AUTOMATIC SHUTTER SERIES

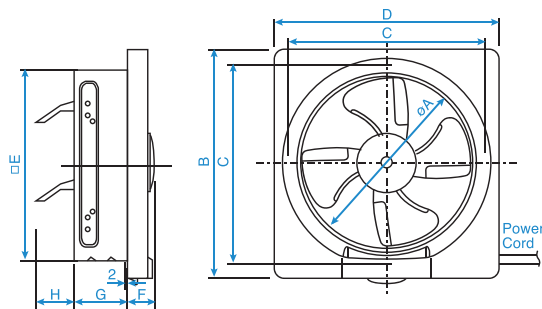
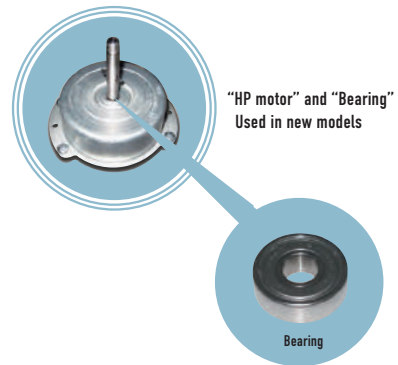


FV-15AST1

- SMART DESIGN
- HALF PITCH MOTOR & BEARING
- THERMAL FUSE EQUIPPED
- SILENT STREAM FAN
- REVERSIBLE FUNCTION

New HP Motor & Bearing

Compared with previous models, new model adopt high performance condenser motor and long life bearing that prolong the product durability, from average 30,000 hours life time. They also enable energy saving by reducing power consumption down to average 13%



Product Dimension

Unit : mm

Model No.	A	B	C	D	E	F	G	H
FV-15AST1	155	250	195	240	170	52	75	54

Specification

Model	Air Volume		Input (W)	Speed (rpm)	Noise (dB(A))	Weight (Kg.)	Grill Size W x L (mm.)	Installation spec W x L (mm.)
	CMH	CFM						
FV-15AST1	290	170	15	1,480	31.0	1.4	240 x 254	175 x 175

Note: The value in Specification tables are representative characteristic value at 220V, 50Hz.
R.P.M. data is for reference only, values may vary subject to different conditions.
The noise level is measured at 1 meter from fan.